

# OBSERVATION POST

A FREE PRESS — AN INFORMED STUDENT BODY

VOLUME XXXX — No. 6

184

TUESDAY, OCTOBER 18, 1966

CITY COLLEGE

## Faculty Reacts To Enrollment Controversy

### Faculty Council to Convene In Emergency Session

An emergency Faculty Council meeting will be held Thursday to consider the controversy over increased enrollments.

Dean of Students Willard W. Blaesser revealed last week that admissions quotas for all City University schools were not finalized, as had been assumed previously.

Three basic proposals, prepared by an ad hoc committee of six Faculty Council members, will be presented for approval, according to Council Secretary, Professor James Mirolo (English).

The first resolution will deal directly with enrollment, asking that the College not be obligated to admit more students than other CU colleges, while the second will recommend that the cut-off score on admissions average not be lower than at the other schools.

The third proposal will concern the reason the College is not attracting as many students as the other colleges of the CU. Prof. Mirolo emphasized that "the bad facilities at the College that might be discouraging prospective students" will be discussed.

The three resolutions are "directed at expressing the feelings of Faculty Council on these basic issues," Prof. Mirolo said.

The members of the committee designated to write the resolutions are Dean Reuben Frodin of Liberal Arts and Sciences, Prof. Mirolo,



Professor Edmund M. Volpe Expects Unanimous Backing

and Professors Stanley Feingold (Political Science), Arthur E. Tiedeman (History), Arthur S. Bierman (Physics) and Martin Sachs (Biology).

### Volpe Attacks Overcrowding In Letter to Gallagher

By LINDA FEUERBERG

Professor Edmund M. Volpe (Chmn., English) attacked plans to admit additional freshman and erect temporary facilities in a letter to President Buell G. Gallagher yesterday.

"I expect the [English] faculty to back me unanimously," he said.

Copies of the chairman's letter were distributed yesterday among the English faculty — both Uptown and Baruch — so that "those who wish to endorse my protest may sign a copy of this letter," he explained.

The signatures will be delivered to the President today.

Prof. Volpe criticized the "decision of the University administrators to increase the enrollment at the College before adequate and permanent educational facilities are made available."

Although he would have preferred the department to act as a unit, he said, in expressing their opposition, he felt immediate action was necessary.

At a departmental meeting Thursday, a resolution similar to the letter was returned to the drafting committee for re-word-

ing. "This is the quickest form of protest at the moment," Prof. Volpe said, "As I am not able to call another departmental meeting until November."

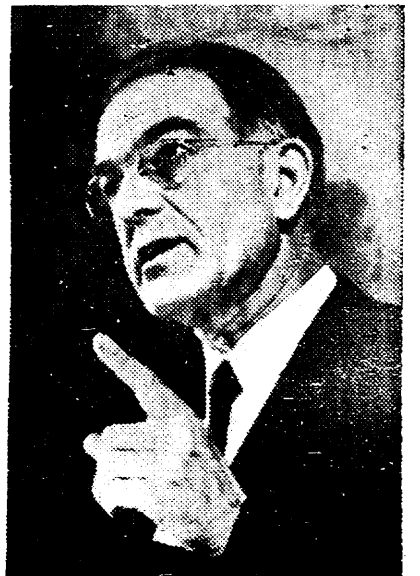
Dean Leo Hamalian (Curricular Guidance), a member of the drafting committee, said Prof. Volpe's letter defined "general principles that put things into focus."

He maintained it was only semantics that differentiated the resolution from Prof. Volpe's letter, and expressed his wholehearted support of the protest.

Professor Theodore Gross (English) was in "complete agreement" with the chairman's statement. He urged the College's faculty and entire student body to unite behind "the chairman of the largest department in the College."

"We're all signing it," said Professor Henry Leffert (English). "I agree absolutely, and I hope the whole faculty does too."

Dr. Gallagher was unavailable for comment.



President Buell G. Gallagher Criticized for Policies

The letter states, "The educational facilities at the College are already so inadequate that faculty and student morale has become a major problem."

Prof. Volpe pointed out that even without the four thousand additional students the chaos from workmen, machines and convoys of trucks working on the massive building project in the next few years "will make most levels of Dante's Inferno seem Edenic."

(Continued on Page 2)

## Finley Center Room Changes Approved by Advisory Board

By IVON SCHMUKLER

The Finley Center Board of Advisors approved last night the first major room re-allocation since 1958.

The changes were made after evaluating community and college service, as well as membership of student organizations, according to Edmond Sarfaty, the Center's director.

"It is not enough for a club to be big; what you did with your size was a major consideration," he explained.

Several North Campus organizations were allotted Finley Center rooms for the first time, Sarfaty said.

Questionnaires were sent out last year to each organization by Kathryn Burke (Student Life), who asked groups to evaluate their needs and to explain their programs.

Sarfaty stressed that the offices are not intended as meeting rooms, but rather for officers to do paperwork in.

The Board of Advisors also established machinery for seeking a room change. Organizations will present their grievances to their student government president, who will screen cases before consulting Sarfaty.

Among the various changes: ● Caduceus Society, Biology Society and Baskerville Chemis-

try Society in Room 418.

● Logos, Mercury, Promethean and the Sociology-Anthropology Society in Room 419.

● Anarchist Discussion Group, Progressive Labor Party, Students for a Democratic Society, Young Socialist Alliance, Youth Against War and Fascism, and the Independent Committee in Room 206.

● Association for the United States Army, Webb Patrol and the Christian Association were moved to smaller rooms.

● WCCR was moved to a larger and soundproof room.

### Promethean...

Promethean, the College's literary magazine will hold a workshop Friday at 4 PM in Room 427 Finley. All students who wish to discuss and read their poetry or stories are welcome to attend.

## New CU Centers To Give Aid To Educationally Handicapped

By NANCY LINDE

A new program to prepare high school graduates from disadvantaged backgrounds for jobs and possibly for college will be launched by the City University, under contract with the State University.

Experimental educational centers will be opened in Harlem and in the Bedford-Stuyvesant area of Brooklyn "within the

next few weeks," CU Chancellor Albert H. Bowker announced last Wednesday.

The new units, to be known as State University Urban Centers, will eventually take in students who have dropped out of high school.

Director Named

Dr. Bowker named Dr. George H. Howard, director of the Brooklyn urban center. Lucius C. Watson, who has held posts with the City Housing and Home Finance Agency and the United States Department of Health, will direct the Manhattan center.

The Brooklyn center, under the operation of New York Community College, will be situated in the Schrader Building at 470 Vanderbilt Avenue. The Manhattan center will be operated by Manhattan Community College at an undetermined site.

Under State Contract

The City University will operate the units under a state contract of nearly \$1 million for the first year.

Governor Nelson A. Rockefeller proposed the centers earlier this year to help students over high school age to acquire marketable skills. They were originally described as Urban Colleges.

## Ex-Student Tries For Albany

Wendy Nakashima, a former student at the College and a member of the Progressive Labor Party, is seeking a seat in the State Assembly.

Her campaign manager and husband, Jake Rosen, said yesterday that they've had "several positive successes already. We're pleased at the response we've gotten from the neighborhood."

Miss Nakashima is running for office in the 69th Assembly District on Manhattan's West Side.

Rosen cited the 3,000 signatures that have been collected, the beginning of a tenants'

group and the organization of a Woman's Commission.

"There are people from West End Avenue and from the Manhattanville projects going out canvassing, distributing literature or doing other campaign work," he said, explaining "some are against the war, some are just concerned with neighborhood and job problems. But they're all enthusiastic."

Miss Nakashima was called to testify before a New York grand jury in February, 1965, on the role of the Progressive Labor Party in the Harlem riots.

She was sentenced to a jail sentence for refusing to answer the grand jury's questions.

### Logos...

The Philosophy Society Journal, "Logos," is now accepting articles for publication. Interested students should leave their work in the philosophy society mailbox in 152 Finley.

# OBSERVATION POST

## MANAGING BOARD

JOSH MILLS  
Editor-in-Chief

MARK BRODY  
Associate Editor  
LINDA FEUERBERG  
Managing Editor  
PETER WARFIELD  
Features Editor

MICHAEL KNIGHT  
Associate Editor  
NOE GOLDWASSER  
News Editor  
ERICA RAPPORT  
National News Editor

MIRIAM BORDOFSKY  
Business Manager

## STAFF

NEWS: Nancy Gould, Stu Green, Harry Lew, Marjorie Liss, Ron McGuire, Ivon Schmukler, Rona Schwab, Elaine Schwager, Rona Spalten, Arthur Volbert, Daniel Weisman.

CANDIDATES: Marcia Annenberg, Reid Ashinoff, Ned Barber, Peter Bienstock, Fergus Madigan Bordewich, Alan Brownstein, Maria Figueroa, Richard Glick, Noah David Gurock, Stuart Halpern, Regina D. Keller, Kenneth Kessler, Robert Kleinrock, Bebecca Keren, Joseph Kroll, Catherine Lam, Marc Lampell, Jim Landy, Harry Laub, Jerrold Leichling, Martha Levy, Charles Lichtman, Harold Lichtman, Nancy Linde, Michael Lipkin, Kenneth P. Marion, Alan Milner, Sara Mittelman, Michael Muskal, Gladstone A. Nicholson, Jonathan Penzner, Arthur Pincus, John Platt, Susan Price, Howard Reis, Richard Rosenberg, Ronald Schanz, Phil Schwartz, Sally Shimizu, Merrill Shindler, Steve Simon, Lois Stein, Sydney Stern, David Strassberg, Haskel Strausberg, Ann Taxier.

FACULTY ADVISOR: Prof. Leonard Kriegel (English)

OFFICE: Room 336 Finley. PHONE: FO 8-7438-9

Editorial decisions are determined by majority vote of the Managing Board and Stu Green, Ivon Schmukler, Elaine Schwager, and Daniel Weisman.

OBSERVATION POST is published and edited by students of the City College.

## Volpe Criticizes Overcrowding

(Continued from Page 1)

"I am convinced," he declared, "That the decision to admit so many additional students immediately sacrifices educational standards. I am sure . . . that neither rhetoric nor temporary structures will prevent the quality of education we can provide from deteriorating," he added.

Many of the administrative decisions are understandably emergency measures in this time of the University's infancy. Prof. Volpe continued, "But when such measures seem, from the faculty level at least, to be less responsive to educational principle than to other considerations, then the faculty must oppose."

Prof. Volpe's statement ended on the optimistic note that "surely some means can be found to

provide education for 5,000 students without sacrificing the quality of education being offered to the other 30 or 40 thousand."

Prof. Volpe concluded with his reaction to the student demonstration on the Mott Lawn last week: "I felt ashamed of my

own hesitation in joining their battle to maintain high educational standards at this institution."

"Their efforts," he continued "were unfortunately misdirected . . . but their spirit and determination are admirable. Let this letter serve as my contribution to their efforts."

**Sigma Alpha Mu  
Fraternity  
Congratulates  
Dave Zinamon  
on reaching  
Blue Key  
The National Honor  
Leadership Society and  
Lock and Key**

### School For Jewish Knowledge

Offers courses for young people and adults in Jewish Culture. Literature, History, Yiddish Language (Elementary and Advanced), Bible and Post-Biblical Literature.

Special Courses Fridays 6 to 7 PM with Morris U. Schappes on "The Jewish Question."

Classes Fridays from 5 to 7 PM and Saturdays 10:30 to 2:30 PM.

Room 17 B, Academy Hall,  
853 Broadway (at 14 St.,  
New York, N. Y.  
Information, call: 996-5340

### SPENCER HOUSE

New Members Welcome

THURSDAY: 12:15 PM

Mott 311

## The Breakthrough

Professor Edmund Volpe's attack of the College's plans to jam in extra students no matter how much the overcrowding lowers the quality of education here, is a welcome and surprising development.

Coming from a faculty member — and the chairman of the largest department of the College — it is bound to generate discussion and debate. If the entire English Department is indeed behind him, as he promises, then Dr. Gallagher will know, at long last, that he cannot push ahead without first consulting faculty.

Now that Prof. Volpe has jumped into the breach, it is incumbent upon all faculty to pick up the banner. The College's faculty must move, at the Faculty Council meeting Thursday, to take a firm stand for their rights, and against the degradation of education at the College.

Prof. Volpe said it best: "This central issue can be and has been buried under all kinds of statistics and irrelevant arguments, but I am sure that each member of the teaching faculty knows, as I know, that neither rhetoric nor temporary structures will prevent the quality of education we can provide from deteriorating."

We only hope that the faculty will keep in mind a most important consideration — the right of students to be heard. The real issue here is not temporary structures or overcrowding, but who will make decisions for the College, and no just method can be set up that fails to recognize students' rights.

Every significant concession that has been wrung from the Administration recently has come through student activism: even the exclusive-for-faculty summer referendum came about only after students sat in outside Dr. Gallagher's office; only through a burst of enthusiasm was the most beautiful lawn on campus given a temporary reprieve.

Students should not be shunted aside any longer; we should not have our "oases" amid the stone monsters sacrificed either for faculty parking lots or steel huts; we should not be forced to wait on line in the cafeteria for an hour to pay an inflated price for food; we should not have to fight one another just to wash our hands in the washrooms; we should not have to crowd together in the basement of Wagner Hall with 45 other students in one elective course.

We have had enough. Our education has been sacrificed enough. We have been ignored long enough. We have been the victims of political expediency and short-sighted planning far too often.

It is time for the faculty to seize their rights, and it is time for the students to gain recognition of their rights. It is time for the school to undergo a radical change, to establish once and for all a more democratic means of determining College policy.

Hopefully, Thursday's Faculty Council meeting will see the first step taken.



ON CAMPUS CLASSIC:

**STRETCH LEVI'S®**  
CUT LEAN AND  
LANKY

WITH  
DUPONT NYLON  
FOR FIT  
THAT WON'T  
STRETCH OUT!

STRETCH LEVI'S® SHOWN: 75% COTTON, 25% DU PONT NYLON.  
About \$5.98 in sand, loden, black, cactus, faded blue, navy.  
Du Pont makes fibers, not fabrics or clothes.  
\*Levi Strauss' registered trademark.

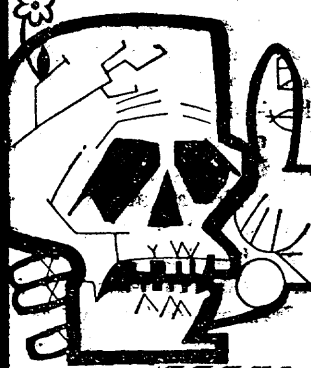


Better Things for Better Living . . . through Chemistry

Best Wishes to **ERICA** for learning to inhale! —J. & L.

Congratulations to **Rick and Naomi Rhoads** Upon the birth of their daughter Donna.

**ALAS POOR YORICK HE COULD HAVE MADE IT WITH CLIFF'S NOTES**



**HAMLET** ... Cliff's Notes

... expertly summarize and explain the plot and characters of more than 125 major plays and novels — including Shakespeare's works. Improve your understanding — and your grades. Call on Cliff's Notes for help in any literature course.

25 Titles in all — among them these favorites:

- Hamlet • Macbeth • Scarlet Letter • Tale of Two Cities • Moby Dick • Return of the Native • The Odyssey • Julius Caesar • Crime and Punishment • The Iliad • Great Expectations • Huckleberry Finn • King Henry IV Part I • Wuthering Heights • King Lear • Pride and Prejudice • Lord Jim • The Tenth Man • Gulliver's Travels • Lord of the Flies

\$1 at your bookseller or write:

**Cliff's Notes** CLIFF'S NOTES, INC. 1400 Broadway Station, Lincoln, Nebr. 68503

The Brotherhood of the ALPHA Chapter of **PHI EPSILON PI**

invites ALL FRESHMEN to

**LAST OPEN RUSH PARTY**

Friday, Oct. 21, 8 PM

Interviews — Refreshments

124 W. 179th St., Bronx (off University Ave.)

**PART-TIME JOBS For College Students**

"College Temps" serves the needs of industry, banks, utilities, etc., who constantly need personnel on a part-time or temporary basis.

The pay is good and the opportunities open the doors to full-time summer jobs and permanent careers.

**NO FEES TO PAY**

Call Today... **986-3044**



**COLLEGE TEMPS** TEMPORARY PERSONNEL SERVICE 342 Madison Ave. (44th St.) • New York

**Booters**

(Continued from Page 4)

The win gave LIU a 5-1-0 record and dropped the booters to 1-3-1, their worst start in four years. It was the most devastating loss on record for the Beavers, topping last year's 4-0 whitewash by NYU and the first win by LIU over the Beavers since 1963.

On Saturday, the booters will travel to New Jersey to play the Orangemen of Seton Hall. This could be the game that would help the team work the bugs out of its offense.

Last year, despite a cream puff front line, the booters ripped the

Jerseyites 6-0. But Climm Soas, who tallied five times, is no longer on the team and it will be up to the 1966 booters to break their three game losing streak.

**Harriers...**

(Continued from Page 4)

The surprising finish by Nicholson, plus the expected return of Woody Lane, a sophomore, helps to allay, for the moment, some fears expressed by Harrier followers, about the serious lack of depth on the Cross Country squad.

New York Daily News, Oct. 17, 1966:

**"Fear A SAM Try To Down A B-52" SAM'S are Everywhere**

Smoker, Tuesday, October 18, 1966 — 2 to 6 PM Room 438 F

You are cordially invited to attend a RUSH-PARTY tonight at:

**BETA DELTA MU**

163 E. 175th St., (1/2 block East of the Concourse)

Just look for the man wearing carnations.

**Alpha Mu Phi**

Invites you to an

**OPEN RUSH SOCIAL**

At 124 DYCKMAN STREET

Friday, October 21, at 8:30 PM

REFRESHMENTS • ENTERTAINMENT

**Phi Lambda Delta**

Congratulates **Bruce and Ellen** On their Wedding

**SAM**

Is having a party at his place this

**Friday Night (Oct. 21)**

at 9:00 PM.

He's a little worried about not having enough room (last time we lost a dozen people from the terrace alone). Anyway, Sam lives at 266 East Broadway, Apt. B 1507. (Take D train to East Broadway, walk three blocks East). \$1.00 contribution; benefit of Roosevelt Ind. Democrats.

**Continuous Phonograph Music.**

Information:

Steve: GR 3-8660, Evelyn: CA 8-8793, Sam: OR 4-1368

**Looking for Self-Fulfillment?**

**SHERUT LA'AM - ISRAEL**

**May Be Your Answer**

To: **Sherut La'am (Service to the People)**

515 PARK AVENUE NEW YORK, N. Y. 10022

I am a graduate — undergraduate (underline one) between 19-30 and would like you to send me, without obligation, FREE information telling how I can serve a full year in Israel for only \$670 which includes round trip fare. (A limited number of long-term loans are available). I understand a knowledge of Hebrew is not a prerequisite.

Name (Please Print)

Major Field of Study

College or Univ.

Street Address

Phone (optional)

City

State

Zip



# Harriers' Depth Edges USMMA, 26-30

By PETER BIENSTOCK

In what was billed as a tight match, and turned out to be just that, the College's Cross-Country team extended its perfect record to 5-0 Saturday by beating a deep team from the United States Merchant Marine Academy at Kings Point, 26-30.

As usual, Jim O'Connell won

the five-mile race, but he surprised almost everyone by running the fastest race run on the Van Cortlandt Park course this year, clocking in at 25:37, just over his record time of 25:18.2.

The win by O'Connell and the second-place finish by Abe Assa, in 27:41, were expected. However, it took Andy Ferrara, who broke up a Kings Point expected 3-4-5 finish with a fifth place finish, and Allan Steinfeld, who produc-

ed a stirring stretch drive to capture seventh place, to win the meet, even though the Mariners captured the eighth, ninth and tenth spots.

Steinfeld, running hand-in-hand with three Kings Point tracksters for over four miles, pulled ahead with less than a mile left to the race and clinched the victory.

Aside from the team scoring, the race was all Jim O'Connell,

as he trounced his nearest Kings Point competition by more than two minutes. Just before the



Jim O'Connell  
Another New Record

start of the race, Manhattan's Brian Kivlan, who O'Connell will face in the near future, complet-

ed the fastest course time the year up until then, 25:59.

As O'Connell began, he knew of this, and after bettering Kivlan's time for three miles nine seconds, O'Connell decided to go as hard as he could.

Later, he cited Kivlan as the reason for his surprisingly fast time so early in the season. He explained it as an attempt to "psych out" the opponent he will face in two weeks, and commented, "There is more to running distances than just running. There are all sorts of little nuances and tricks which can be used to get an advantage." The meet with Manhattan should generate excitement.

Another bright spot for the Harriers was the 29:41 race run by freshman Gladstone Nicholson, who Coach Francisco Castano only half-jokingly referred to as "the one to replace Jim O'Connell" next year.

Usually Freshmen do not run five miles, but since the Merchant Marine Academy does not have a Freshman team, the College's Freshmen attempted to run the course just for the conditioning.

(Continued on Page 3)

# First-Place LIU Crushes Booters; 5-0 Shutout Drops Record To 1-3-1

By JOEL-PHILIPPE DREYFUSS

Powerful Long Island University scored three times in the first quarter and coasted to a 5-0 victory over the College's soccer team Saturday.

The loss was the booters' third in a row and the worst defeat any Beaver soccer team has ever suffered.

The game was the second half of a double header serving as a clinic for metropolitan area high schoolers. Played at NYU's field, it was apparent the crowd of 300 was for the Beavers, hoping to see an upset.

Both teams started beautifully, making pinpoint passes and dribbling gracefully. The defenses seemed impenetrable as they squelched all threats and blasted the ball back to the center of the field.

### Superiority Apparent

LIU's superiority slowly became apparent. When the ball was at midfield they controlled it. When the Beavers got into Blackbird territory, they didn't know what to do.



After a 10-minute exploratory stage, LIU went into high gear. The passes became faster and more dangerous. The LIU halfbacks moved up to add to the pressure. At 12:10 of the quarter, LIU All-American Dov Marcus headed a loose ball to the feet of his teammate, Carlo Tramontozzi. The All-Met forward flasted a 10-yarder into the left-corner to make the score 1-0.

Smelling blood, the Blackbirds unleashed their power. The Beaver backs now booted the ball out desperately to save their goalkeeper time after time.

At 18:55 Hugh Reid of LIU placed a corner kick right in front of the Lavender goal. His teammate, Albert Soria, dived to head it past goalie Dave Benishai for the second goal.

Less than two minutes later, Blackbird center forward, Sam Ferrell pushed by two Beaver defenders, drew goalie Benishai out and headed a pass from Soria into the nets.

The 3-0 lead was more than enough but LIU wouldn't relent. They could not do anything wrong. As one observer put it, "They looked like professionals."

They were more aggressive, getting the jump on the ball as the Lavender became more cautious under the onslaught. Only the valiant efforts of Beaver defensemen Ted Jonke, Everard Rhoden, and Marc Messing, who played a superb game, kept the score down.

In the third quarter, Beaver halfbacks, Santiago Ferrari and Jose Fraga gained control of the midfield and spearheaded the only Lavender threat of the game. For 10 minutes the ball was on the LIU side, but the stingiest defense in the league held the booters scoreless.

Late in the period the tide turned again. The Beaver defense failed to clear the ball on several attempts. LIU forward Soria moved into range, stole the ball and threaded it through a mass of jerseys for his second goal of the day and LIU's fourth.

With the game's outcome assured, the Blackbird coach put in some subs. At 14:30 scrub Mike Hogan ran down the sideline, beat Beaver fullback Jonke and lofted a high, arching kick across the Lavender goal. Goalie Benishai threw himself desperately into the air to block the ball. The shot eluded him and sailed inside far pole for the final LIU goal.

The game ended the Beavers' hope for the league championship and they can now concentrate on winning their remaining contests against weaker opponents. The loss also indicated the everpresent weakness of Lavender teams — no offense.

(Continued on Page 3)

# Non-League Win Readies Nimrods

The College's rifle team tuned up for its league opener against Brooklyn College, Oct. 28, with a 1053-917 victory over Cooper Union, Friday.

The Nimrods were led by Dave Keller, with 266, and Frank Yones, 265. Sam Seiffer, shooting in his first match, placed third with a 262.

Five Beavers outshot the leading Cooper Union scorer, Geoffrey Gentile, who fired a 249. Under new rules this season, only the top four scores are included in the team total.

### "Much Better"

Other Beaver scores were Paul Kanciruk at 260, Alan Feit, 256; Jim Maynard, 248; Richard Moroff, 238; Mike Siefel, 234; and Roger Brotman, 233.

Feit, the Nimrods' captain, predicted "much better" scores once the league season begins.

Mike and Dorothy

Are going to be the Thomashefskys!

Congratulations!

Love,

Kenny and Margie

Last Chance to rush  
**BETA SIGMA RHO**  
27 Hamilton Terrace

FRIDAY • 8:30 PM • LIVE BAND

# The Brothers of TAU EPSILON PHI

Extend their Heartfelt Congratulations to

HARRY and ROSALIE

BARRY and ADELE

AL and RUTH

LARRY and MARCIA

PHIL and MONICA

On the Occasion of their Pinnings

# TAU EPSILON PHI

Presents

In their First American Appearance After Extended European Tour, the

# MODERN JAZZ QUARTET

IN CONCERT

Hunter College Assembly Hall

FRIDAY, NOVEMBER 18, 1966

8:30 PM

Tickets: \$4.50, 3.50, 2.50, Available in the CCNY Bookstore, 19 AM-4 PM. Portion of Proceeds to World University Service.